

INTERNATIONAL PATENTS PENDING



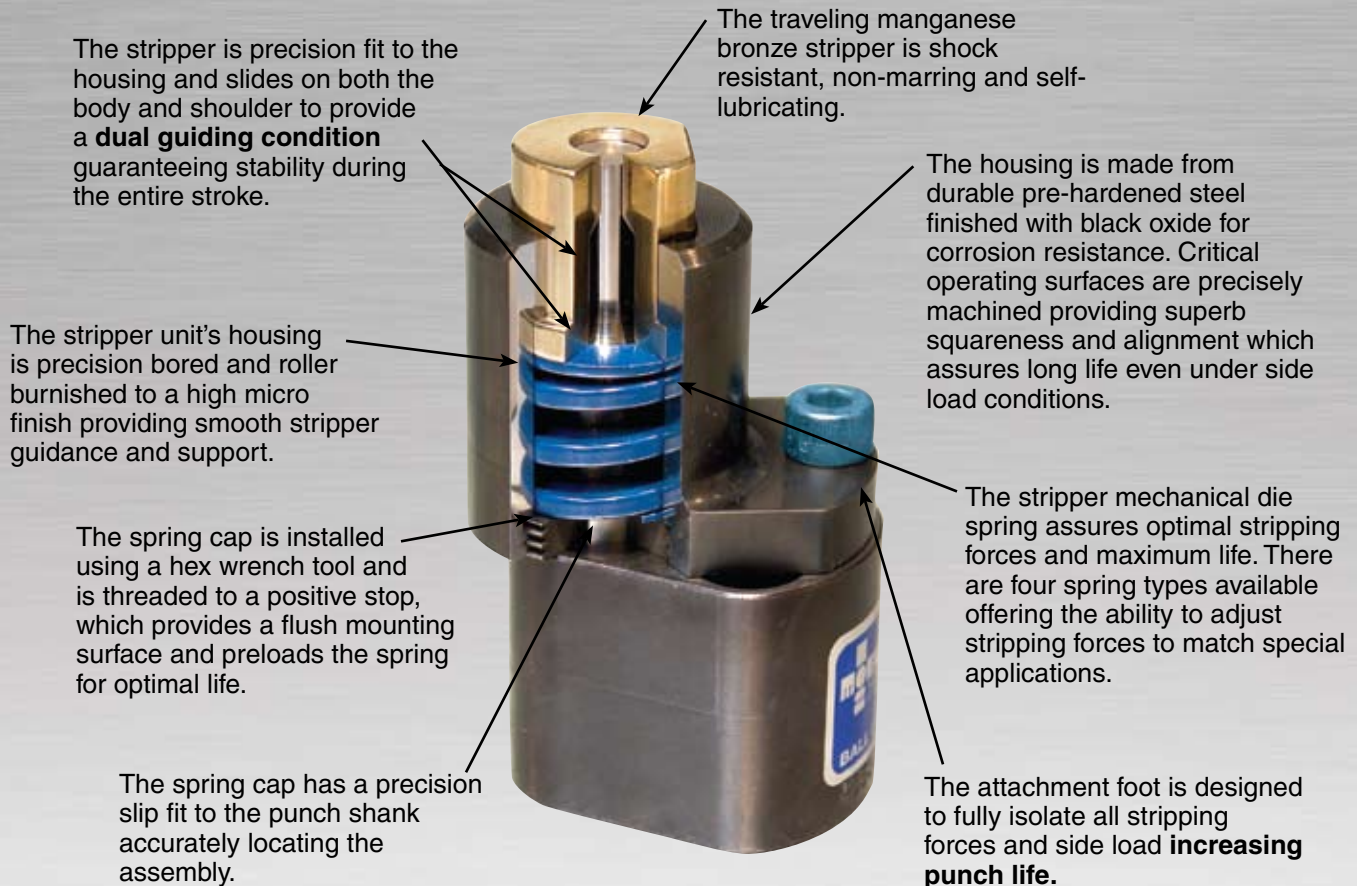
***THE WORLD'S FIRST STANDARD  
MECHANICAL PUNCH STRIPPER***



INTERNATIONAL PATENTS PENDING

- Fits standard Heavy and Light Duty Ball Lock and Shoulder Style Retainers.
- Exclusive preloaded die spring for extended life.
- A variety of springs are available for a wide range of stripping forces. See page 11 for details.
- Custom strippers for contoured panels, multi-hole punches and non-marring applications.
- Eliminates expensive custom stripper plates.
- The industries strongest and most accurate off the shelf mechanical stripper.
- Innovative One-Piece, self-contained construction.
- Special multi-hole retainer designs available upon request.

## BENEFITS & FEATURES:





# CLUSTER PUNCH RETAINER ASSEMBLY



40.0 mm Punch Shank Diameter Example

32.0 mm Punch Shank  
Diameter Example



Standard  
Units Adapted  
to Existing  
Special  
Retainer



Special Factory Design for Specific Applications



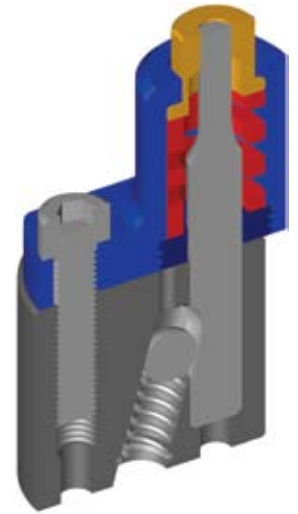
**ENGINEERING & DESIGN PROVIDED**



# STANDARD STYLE RETAINER

## HEAVY DUTY BALL LOCK

# METRIC

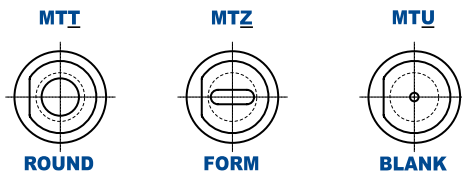
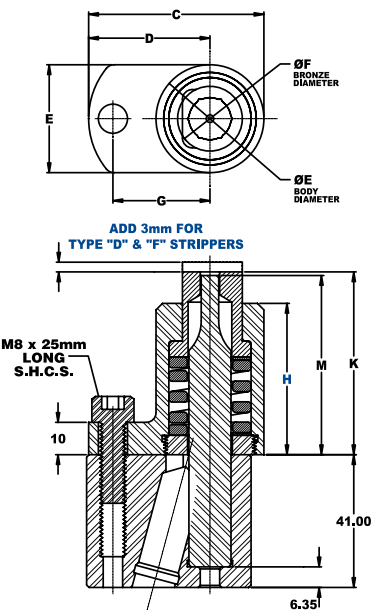


INTERNATIONAL PATENTS PENDING

**SPECIFY AT TIME OF ORDER:**

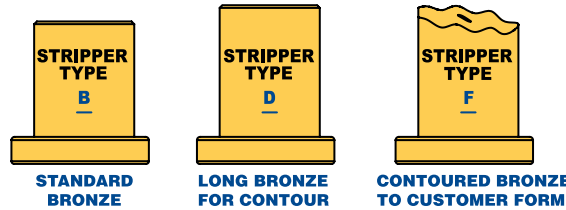
- If retainer and punch are required, please purchase as additional line items at time of order.
- If panel contour is required on stripper face, please specify at time of order and provide surface data. P.O.R.
- Denote punch point dimensions at time of order for factory machining.

**STANDARD UNIT**



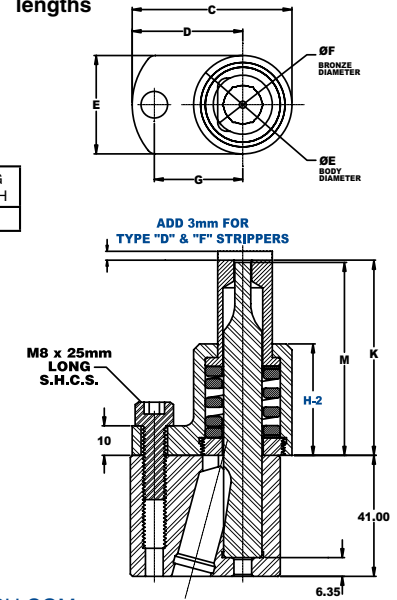
SIZE	PUNCH			PUNCH SHANK DIA.	PUNCH LENGTH	PUNCH STRIPPER	LONG REACH
METRIC	BALL LOCK				80 90 100	B D F	LR
M	ROUND	FORM	BLANK				
	T	Z	U				

**MTT 10 - 80 / SB / LR**



**LR LONG REACH / COMPACT UNIT**

Note: Only available in 90mm & 100mm lengths



CAD FILES AVAILABLE FOR DOWNLOAD AT [WWW.MOELLERPUNCH.COM](http://WWW.MOELLERPUNCH.COM)

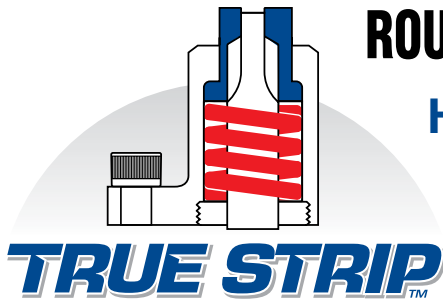
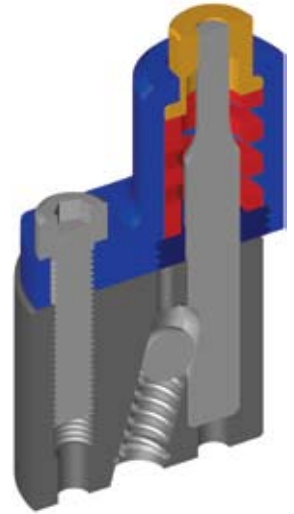
COMPLETE ASSEMBLY CATALOG NO.	C	D	E	F	G	H	H-2	K	M	STANDARD MAX TRAVEL FROM K-DIM.	LONG REACH/COMPACT MAX TRAVEL FROM K-DIM.	HEX TOOL SIZE	UNALTERED BLANK TRUE-STRIP UNIT
MT_10-80/S						37.74		45.85	45.35	6.3			MTU10-80/S
MT_10-90/S	47.4	33.9	27	15	26.9	46.74	37.74	55.85	55.35	6.3	6.3	3/8"	MTU10-90/S
MT_10-100/S						54.52		65.86	65.36	8.4			MTU10-100/S
MT_13-80/S						37.74		46.46	45.35	6.5			MTU13-80/S
MT_13-90/S	54.1	37.5	33.3	20	30	46.74	37.74	56.46	55.35	6.5	6.5	1/2"	MTU13-90/S
MT_13-100/S						54.52		66.46	65.36	8.5			MTU13-100/S
MT_16-80/S						37.74		46.85	45.35				MTU16-80/S
MT_16-90/S	58.7	38.7	40	27	31.8	46.74	37.74	56.85	55.35	7.9		5/8"	MTU16-90/S
MT_16-100/S						54.52		67.95	65.36	9.5		7.9	MTU16-100
MT_20-80/S						37.74		46.85	45.35	7.3			MTU20-80/S
MT_20-90/S	65.4	42.4	46.1	33	33.5	46.74	37.74	56.85	55.35	7.3	7.3	3/4"	MTU20-90/S
MT_20-100/S						54.52		66.86	65.36	8.1			MTU20-100/S
MT_25-80/S						37.74		46.85	45.35	8.5			MTU25-80/S
MT_25-90/S	74.9	47.1	55.6	42.5	40.6	46.74	37.74	56.85	55.35	8.5	8.5	24mm	MTU25-90/S
MT_25-100/S						54.52		66.86	65.36	9.3			MTU25-100/S
MT_32-80/S						37.74		46.85	45.35				MTU32-80/S
MT_32-90/S	78.9	47.1	63.5	50.6	40.6	46.74	37.74	56.85	55.35	7.7		1-1/4"	MTU32-90/S
MT_32-100/S						54.52		66.86	65.36			7.7	MTU32-100/S
MT_40-80/S						37.74		46.85	45.35				MTU40-80/S
MT_40-90/S	90.8	54.5	72.5	59.7	44	46.74	37.74	56.85	55.35	7.6		1-1/2"	MTU40-90/S
MT_40-100/S						54.52		66.86	65.36			7.6	MTU40-100/S

\* For Light Duty Ball Lock application reference page 8 and page 9

# ROUND ECONOMY STYLE RETAINER

## HEAVY DUTY BALL LOCK

# METRIC

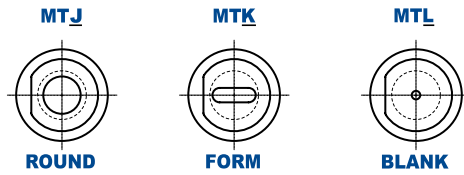
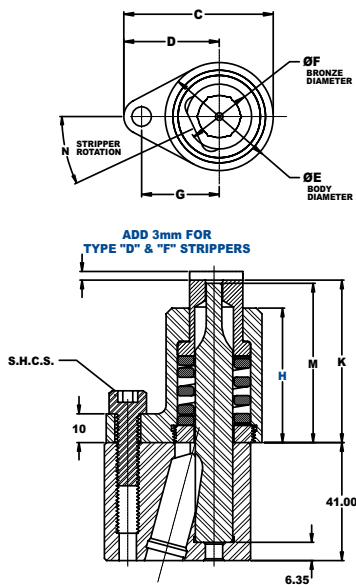


INTERNATIONAL PATENTS PENDING

**SPECIFY AT TIME OF ORDER:**

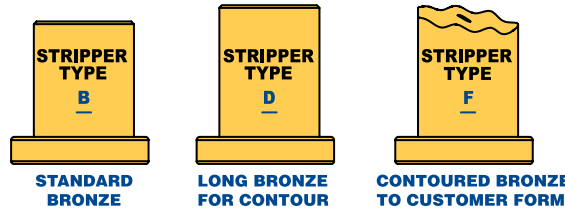
- If retainer and punch are required, please purchase as additional line items at time of order.
- If panel contour is required on stripper face, please specify at time of order and provide surface data. P.O.R.
- Denote punch point dimensions at time of order for factory machining.

**STANDARD UNIT**



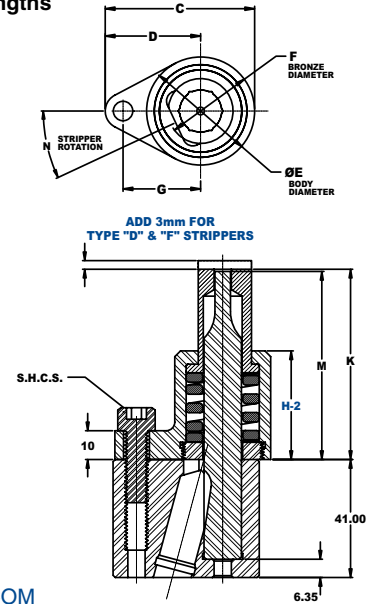
SIZE	PUNCH			PUNCH SHANK DIA.	PUNCH LENGTH			PUNCH STRIPPER			LONG REACH
METRIC	BALL LOCK				80	90	100	B	D	F	LR
M	ROUND	FORM	BLANK								
	J	K	L								

**MTJ 10 - 80 / SB / LR**



**LR LONG REACH / COMPACT UNIT**

Note: Only available in 90mm & 100mm lengths



CAD FILES AVAILABLE FOR DOWNLOAD AT [WWW.MOELLERPUNCH.COM](http://WWW.MOELLERPUNCH.COM)

COMPLETE ASSEMBLY CATALOG NO.	C	D	E	F	G	H	H-2	K	M	N	STANDARD MAX TRAVEL FROM K-DIM.	LONG REACH/COMPACT MAX TRAVEL FROM K-DIM.	S.H.C.S.	HEX TOOL SIZE	UNALTERED BLANK TRUE-STRIP UNIT	
MT_10-80/S	40	26.5	27	15	21	37.74		46.5	46	22.5°	6.3		6mm x 1.0 25mm LONG	3/8"	MTL10-80/S	
MT_10-90/S						46.74	37.74	55.5	55			8.4			6.3	MTL10-90/S
MT_10-100/S						54.52		65.5	65							MTL10-100/S
MT_13-80/S	46.1	29.4	33.3	20	23.9	37.74		46.5	46	25°	6.5		1/2"	MTL13-80/S		
MT_13-90/S						46.74	37.74	55.5	55			8.5		6.5	MTL13-90/S	
MT_13-100/S						54.52		65.5	65						MTL13-100/S	
MT_16-80/S	50	30	40	27	24.5	37.74		46.5	46	18.5°	7.9		5/8"	MTL16-80/S		
MT_16-90/S						46.74	37.74	55.5	55			9.5		7.9	MTL16-90/S	
MT_16-100/S						54.52		65.5	65						MTL16-100	
MT_20-80/S	59	36	46.1	33	29	37.74		46.5	46	18°	7.3		3/4"	MTL20-80/S		
MT_20-90/S						46.74	37.74	55.5	55			8.1		7.3	MTL20-90/S	
MT_20-100/S						54.52		65.5	65						MTL20-100/S	
MT_25-80/S	68.3	40.5	55.6	42.5	33.5	37.74		46.5	46	23°	8.5		24mm	MTL25-80/S		
MT_25-90/S						46.74	37.74	55.5	55			9.3		8.5	MTL25-90/S	
MT_25-100/S						54.52		65.5	65						MTL25-100/S	
MT_32-80/S	79.4	47.6	63.5	50.6	40.6	37.74		46.5	46	20°	7.7		1-1/4"	MTL32-80/S		
MT_32-90/S						46.74	37.74	55.5	55			7.7		7.7	MTL32-90/S	
MT_32-100/S						54.52		65.5	65						MTL32-100/S	
MT_40-80/S	87.2	51	72.5	59.7	44	37.74		46.5	46	20°	7.6		1-1/2"	MTL40-80/S		
MT_40-90/S						46.74	37.74	55.5	55			7.6		7.6	MTL40-90/S	
MT_40-100/S						54.52		65.5	65						MTL40-100/S	

\* For Light Duty Ball Lock application reference page 8 and page 9

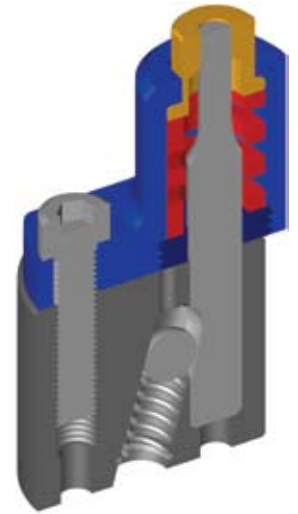
# STANDARD STYLE RETAINER HEAVY DUTY BALL LOCK INCH

**TRUE STRIP™**

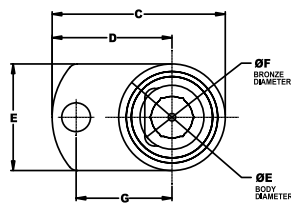
INTERNATIONAL PATENTS PENDING

**SPECIFY AT TIME OF ORDER:**

- If retainer and punch are required, please purchase as additional line items at time of order.
- If panel contour is required on stripper face, please specify at time of order and provide surface data. P.O.R.
- Denote punch point dimensions at time of order for factory machining.

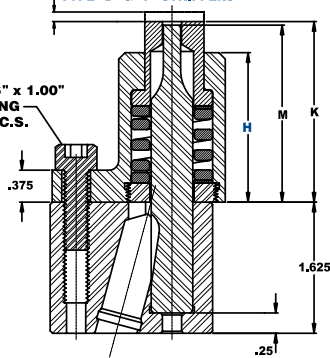


**STANDARD UNIT**

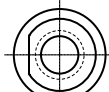


ADD .125" FOR TYPE "D" & "F" STRIPPERS

UNC 5/16" x 1.00" LONG S.H.C.S.

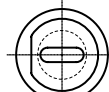


**ITT**



**ROUND**

**ITZ**



**FORM**

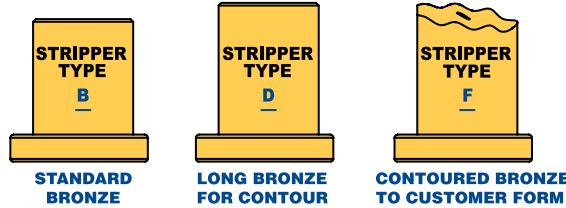
**ITU**



**BLANK**

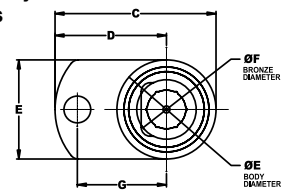
SIZE	PUNCH			PUNCH SHANK DIA.	PUNCH LENGTH			PUNCH STRIPPER			LONG REACH
INCH	BALL LOCK				325	350	400	B	D	F	LR
I	ROUND	FORM	BLANK								
	T	Z	U								

**ITT 37 - 325 / SB / LR**



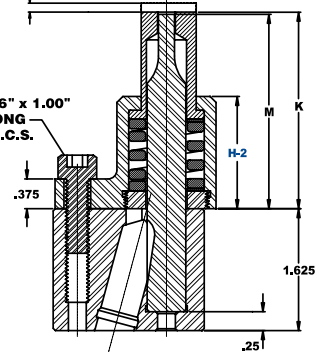
**LR LONG REACH / COMPACT UNIT**

Note: Only available in 3.50" & 4.00" lengths



ADD .125" FOR TYPE "D" & "F" STRIPPERS

UNC 5/16" x 1.00" LONG S.H.C.S.



CAD FILES AVAILABLE FOR DOWNLOAD AT [WWW.MOELLERPUNCH.COM](http://WWW.MOELLERPUNCH.COM)

COMPLETE ASSEMBLY CATALOG NO.	C	D	E	F	G	H	H-2	K	M	STANDARD MAX TRAVEL FROM K-DIM.	LONG REACH/COMPACT MAX TRAVEL FROM K-DIM.	HEX TOOL SIZE	UNALTERED BLANK TRUE-STRIP UNIT
IT_37-325/S_						1.47		1.9	1.88	0.25	0.25	9mm	ITU37-325/S_
IT_37-350/S_	1.87	1.34	1.06	0.59	1.06	1.84	1.47	2.15	2.13				ITU37-350/S_
IT_37-400/S_						2.15		2.65	2.63				ITU37-400/S_
IT_50-325/S_						1.47		1.92	1.88	0.26	0.26	12mm	ITU50-325/S_
IT_50-350/S_	2.13	1.48	1.31	0.79	1.18	1.84	1.47	2.17	2.13				ITU50-350/S_
IT_50-400/S_						2.15		2.67	2.63				ITU50-400/S_
IT_62-325/S_						1.47		1.94	1.88	0.31	0.31	9/16"	ITU62-325/S_
IT_62-350/S_	2.31	1.52	1.57	1.06	1.25	1.84	1.47	2.19	2.13				ITU62-350/S_
IT_62-400/S_						2.14		2.68	2.63				ITU62-400/S_
IT_75-325/S_						1.47		1.94	1.88	0.29	0.29	17mm	ITU75-325/S_
IT_75-350/S_	2.58	1.67	1.81	1.3	1.32	1.84	1.47	2.19	2.13				ITU75-350/S_
IT_75-400/S_						2.15		2.69	2.63				ITU75-400/S_
IT_87-325/S_						1.49		1.94	1.88	0.29	0.29	22mm	ITU87-325/S_
IT_87-350/S_	2.68	1.73	1.91	1.38	1.4	1.84	1.47	2.19	2.13				ITU87-350/S_
IT_87-400/S_						2.15		2.69	2.63				ITU87-400/S_
IT_100-325/S_						1.47		1.94	1.88	0.35	0.35	24mm	ITU100-325/S_
IT_100-350/S_	2.95	1.86	2.19	2	1.6	1.84	1.47	2.19	2.13				ITU100-350/S_
IT_100-400/S_						2.15		2.69	2.63				ITU100-400/S_
IT_125-325/S_						1.47		1.94	1.88	0.3	0.3	1-3/16"	ITU125-325/S_
IT_125-350/S_	3.11	1.86	2.5	2.35	1.6	1.84	1.47	2.19	2.13				ITU125-350/S_
IT_125-400/S_						2.15		2.69	2.63				ITU125-400/S_

\* For Light Duty Ball Lock application reference page 8 and page 9

# ROUND ECONOMY STYLE RETAINER

## HEAVY DUTY BALL LOCK

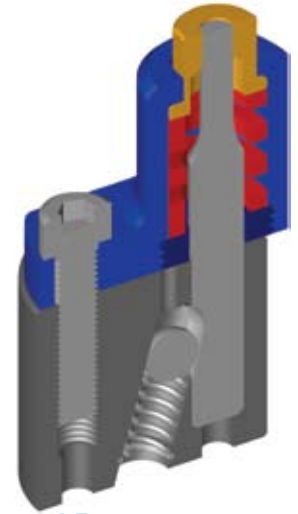
# INCH

**TRUE STRIP™**

INTERNATIONAL PATENTS PENDING

**SPECIFY AT TIME OF ORDER:**

- If retainer and punch are required, please purchase as additional line items at time of order.
- If panel contour is required on stripper face, please specify at time of order and provide surface data. P.O.R.
- Denote punch point dimensions at time of order for factory machining.

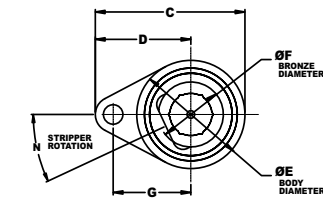


**LR**

**LONG REACH / COMPACT UNIT**

Note: Only available in 3.50" & 4.00" lengths

**STANDARD UNIT**



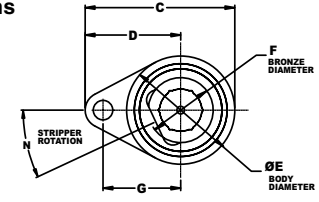
**ITJ**



**ITK**

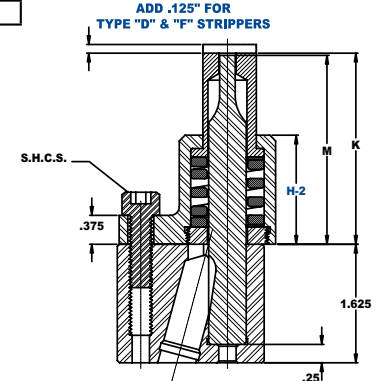
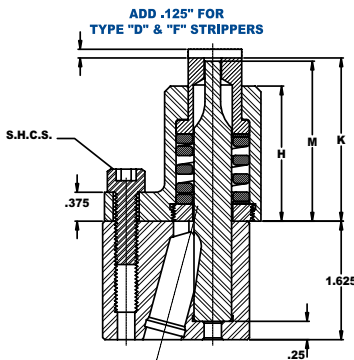
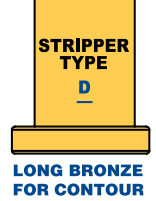
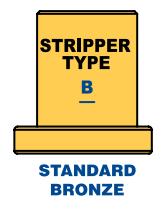


**ITL**



SIZE	PUNCH			PUNCH SHANK DIA.	PUNCH LENGTH			PUNCH STRIPPER			LONG REACH
INCH	BALL LOCK				325	350	400	B	D	F	LR
I	ROUND	FORM	BLANK								
	J	K	L								

**ITJ 37 - 325 / SB / LR**



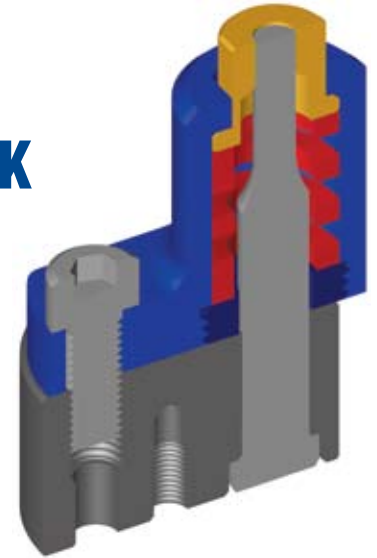
CAD FILES AVAILABLE FOR DOWNLOAD AT [WWW.MOELLERPUNCH.COM](http://WWW.MOELLERPUNCH.COM)

COMPLETE ASSEMBLY CATALOG NO.	C	D	E	F	G	H	H-2	K	M	N	STANDARD MAX TRAVEL FROM K-DIM.	LONG REACH/COMPACT MAX TRAVEL FROM K-DIM.	S.H.C.S.	HEX TOOL SIZE	UNALTERED BLANK TRUE-STRIP UNIT
IT 37-325/S	1.57	1.04	1.06	0.59	0.83	1.47	1.47	1.9	1.88	22.5°	0.25	0.25	1/4" x 20 1.00 LONG	9mm	ITL37-325/S
IT 37-350/S						1.84		2.15	2.13						ITL37-350/S
IT 37-400/S						2.15		2.65	2.63						ITL37-400/S
IT 50-325/S	1.81	1.16	1.31	0.79	0.94	1.47	1.47	1.92	1.88	25°	0.26	0.26		12mm	ITL50-325/S
IT 50-350/S						1.84		2.17	2.13						ITL50-350/S
IT 50-400/S						2.15		2.67	2.63						ITL50-400/S
IT 62-325/S	1.99	1.21	1.57	1.06	1	1.47	1.47	1.94	1.88	24.5°	0.31	0.31	9/16"	ITL62-325/S	
IT 62-350/S						1.84		2.19	2.13					ITL62-350/S	
IT 62-400/S						2.14		2.68	2.63					ITL62-400/S	
IT 75-325/S	2.34	1.44	1.81	1.3	1.18	1.47	1.47	1.94	1.88	22.0°	0.29	0.29	17mm	ITL75-325/S	
IT 75-350/S						1.84		2.19	2.13					ITL75-350/S	
IT 75-400/S						2.15		2.69	2.63					ITL75-400/S	
IT 87-325/S	2.46	1.5	1.91	1.38	1.25	1.49	1.49	1.94	1.88	21.0°	0.29	0.29	22mm	ITL87-325/S	
IT 87-350/S						1.84		2.19	2.13					ITL87-350/S	
IT 87-400/S						2.15		2.69	2.63					ITL87-400/S	
IT 100-325/S	2.69	1.59	2.18	2	1.32	1.47	1.47	1.94	1.88	23°	0.35	0.35	24mm	ITL100-325/S	
IT 100-350/S						1.84		2.19	2.13					ITL100-350/S	
IT 100-400/S						2.15		2.69	2.63					ITL100-400/S	
IT 125-325/S	3.12	1.87	2.5	2.35	1.6	1.47	1.47	1.94	1.88	20°	0.3	0.3	1-3/16"	ITL125-325/S	
IT 125-350/S						1.84		2.19	2.13					ITL125-350/S	
IT 125-400/S						2.15		2.69	2.63					ITL125-400/S	

\* For Light Duty Ball Lock application reference page 8 and page 9



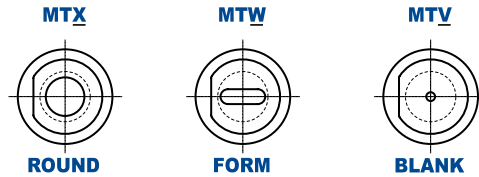
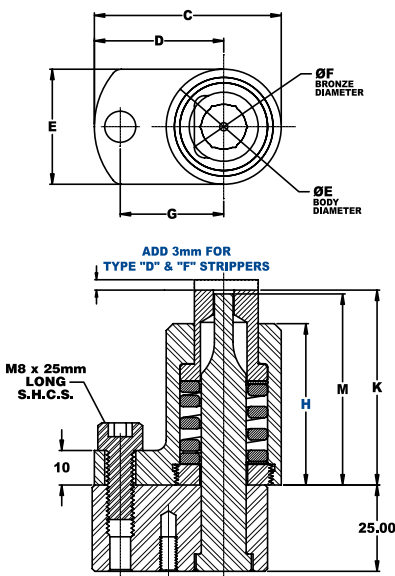
# SHOULDER STYLE & LIGHT DUTY BALL LOCK RETAINERS METRIC



## SPECIFY AT TIME OF ORDER:

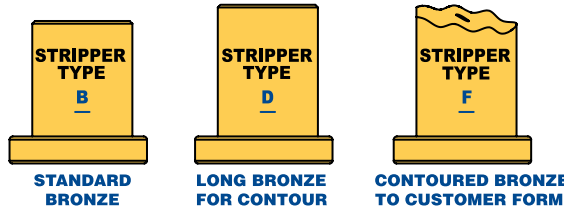
- If retainer and punch are required, please purchase as additional line items at time of order.
- If panel contour is required on stripper face, please specify at time of order and provide surface data. P.O.R.
- Denote punch point dimensions at time of order for factory machining.

### STANDARD UNIT



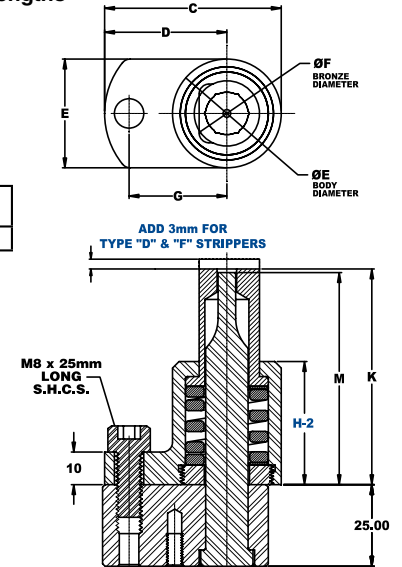
SIZE METRIC	PUNCH SHOULDER STYLE			PUNCH SHANK DIA.	PUNCH LENGTH			PUNCH STRIPPER			LONG REACH
	ROUND	FORM	BLANK		71	80	90	B	D	F	
M	X	W	V								LR

**MTX 10 - 71 / SB / LR**



### LR LONG REACH / COMPACT UNIT

Note: Only available in 80mm & 90mm lengths

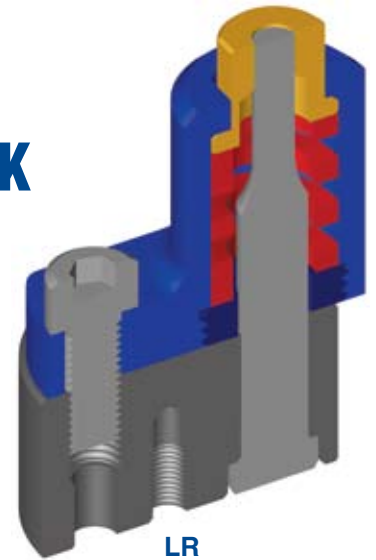


CAD FILES AVAILABLE FOR DOWNLOAD AT [WWW.MOELLERPUNCH.COM](http://WWW.MOELLERPUNCH.COM)

COMPLETE ASSEMBLY CATALOG NO.	C	D	E	F	G	H	H-2	K	M	STANDARD MAX TRAVEL FROM K-DIM.	LONG REACH/COMPACT MAX TRAVEL FROM K-DIM.	HEX TOOL SIZE	UNALTERED BLANK TRUE-STRIP UNIT
MT_10-71/S	47.4	33.9	27	15	26.9	37.74	37.74	46.5	46	6.3	6.3	3/8"	MTV10-71/S
MT_10-80/S						46.74		55.5	55				MTV10-80/S
MT_10-90/S						54.52		65.5	65				MTV10-90/S
MT_13-71/S	54.1	37.5	32.3	20	30	37.74	37.74	46.5	46	6.5	6.5	1/2"	MTV13-71/S
MT_13-80/S						46.74		55.5	55				MTV13-80/S
MT_13-90/S						54.52		65.5	65				MTV13-90/S
MT_16-71/S	58.7	38.7	40	27	31.8	37.74	37.74	46.5	46	7.9	7.9	5/8"	MTV16-71/S
MT_16-80/S						46.74		55.5	55				MTV16-80/S
MT_16-90/S						54.52		65.5	65				MTV16-90
MT_20-71/S	65.4	42.4	46.1	33	33.5	37.74	37.74	46.5	46	7.3	7.3	3/4"	MTV20-71/S
MT_20-80/S						46.74		55.5	55				MTV20-80/S
MT_20-90/S						54.52		65.5	65				MTV20-90/S
MT_25-71/S	74.9	47.1	55.6	42.5	40.6	37.74	37.74	46.5	46	8.5	8.5	24mm	MTV25-71/S
MT_25-80/S						46.74		55.5	55				MTV25-80/S
MT_25-90/S						54.52		65.5	65				MTV25-90/S
MT_32-71/S	78.9	47.1	63.5	50.6	40.6	37.74	37.74	46.5	46	7.7	7.7	1-1/4"	MTV32-71/S
MT_32-80/S						46.74		55.5	55				MTV32-80/S
MT_32-90/S						54.52		65.5	65				MTV32-90/S



# SHOULDER STYLE & LIGHT DUTY BALL LOCK RETAINERS INCH



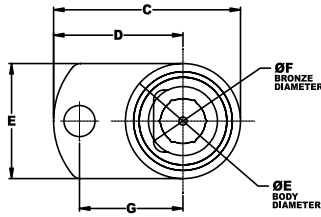
**LR**  
**LONG REACH / COMPACT UNIT**

Note: Only available in 3.50" & 4.00" lengths

**SPECIFY AT TIME OF ORDER:**

- If retainer and punch are required, please purchase as additional line items at time of order.
- If panel contour is required on stripper face, please specify at time of order and provide surface data. P.O.R.
- Denote punch point dimensions at time of order for factory machining.

**STANDARD UNIT**



**ITX**



**ROUND**

**ITW**

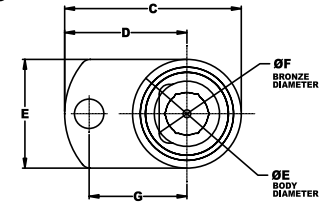


**FORM**

**ITV**

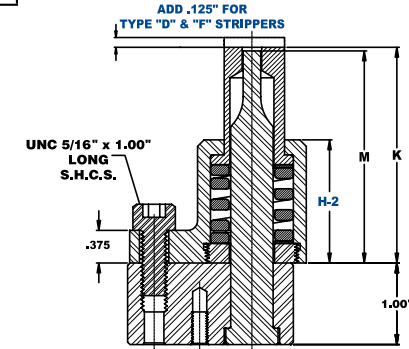
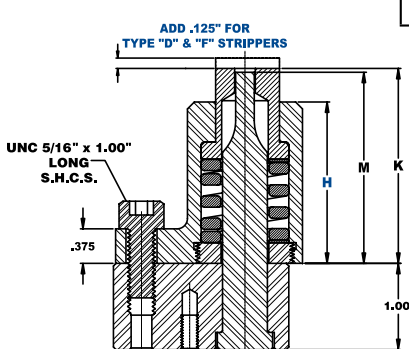
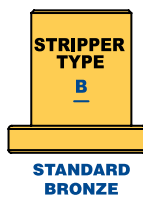


**BLANK**



SIZE	PUNCH			PUNCH SHANK DIA.	PUNCH LENGTH			PUNCH STRIPPER			LONG REACH
INCH	SHOULDER STYLE				300	325	350	B	D	F	LR
I	ROUND	FORM	BLANK								
	X	W	V								

**MTX 37 - 300 / SB / LR**



CAD FILES AVAILABLE FOR DOWNLOAD AT [WWW.MOELLERPUNCH.COM](http://WWW.MOELLERPUNCH.COM)

COMPLETE ASSEMBLY CATALOG NO.	C	D	E	F	G	H	H-2	K	M	STANDARD MAX TRAVEL FROM K-DIM.	LONG REACH/COMPACT MAX TRAVEL FROM K-DIM.	HEX TOOL SIZE	UNALTERED BLANK TRUE-STRIP UNIT
IT_37-300/S_	1.87	1.34	1.06	0.59	1.06	1.47	1.47	2.04	2.02	0.25	0.25	9mm	ITV37-300/S_
IT_37-325/S_						1.84		2.29	2.27				ITV37-325/S_
IT_37-350/S_						2.15		2.54	2.52				0.33
IT_50-300/S_	2.13	1.48	1.31	0.79	1.18	1.47	1.47	2.04	2.02	0.26	0.26	12mm	ITV50-300/S_
IT_50-325/S_						1.84		2.29	2.27				ITV50-325/S_
IT_50-350/S_						2.15		2.54	2.52				0.34
IT_62-300/S_	2.31	1.52	1.57	1.06	1.25	1.47	1.47	2.04	2.02	0.31	0.31	9/16"	ITV62-300/S_
IT_62-325/S_						1.84		2.29	2.27				ITV62-325/S_
IT_62-350/S_						2.14		2.54	2.52				0.37
IT_75-300/S_	2.58	1.67	1.81	1.3	1.32	1.47	1.47	2.04	2.02	0.29	0.29	17mm	ITV75-300/S_
IT_75-325/S_						1.84		2.29	2.27				ITV75-325/S_
IT_75-350/S_						2.15		2.54	2.52				0.32
IT_87-300/S_	2.68	1.73	1.91	1.38	1.4	1.47	1.47	2.04	2.02	0.29	0.29	24mm	ITV87-300/S_
IT_87-325/S_						1.84		2.29	2.27				ITV87-325/S_
IT_87-350/S_						2.15		2.54	2.52				0.32
IT_100-300/S_	2.95	1.86	2.19	2	1.6	1.47	1.47	2.04	2.02	0.3	0.3	1-1/4"	ITV100-300/S_
IT_100-325/S_						1.84		2.29	2.27				ITV100-325/S_
IT_100-350/S_						2.15		2.54	2.52				ITV100-350/S_
IT_125-300/S_	3.11	1.86	2.5	2.35	1.6	1.47	1.47	2.04	2.02	0.3	0.3	1-3/16"	ITV125-300/S_
IT_125-325/S_						1.84		2.29	2.27				ITV125-325/S_
IT_125-350/S_						2.15		2.54	2.52				ITV125-350/S_

# TECHNICAL FEATURES & APPLICATION NOTES

## Ordering:

- Unless optional spring is specified at time of order, all stripper units are shipped with blue-medium load springs.
- Standard style True-Strip units are adaptable to all industry standard ball lock and shoulder style retainers. The round economy style True-Strip units only adapt to the exclusive Moeller Round Economy Ball Lock Retainers.
- Please specify punch point dimensions when ordering True-Strip units. When machining True-Strip units in-house the factory recommended clearance between the stripper and the punch is .3mm per side for metric units and .012" for inch units.

## Design/Application:

- Maximum punch entry is calculated by subtracting the difference of M and K dimensions from the published maximum travel.
- Standard design offers up to a 15° maximum pierce angle. Consult factory for special applications.
- Long Reach/Compact True-Strip units offer more clearance between the top of the bronze and the top of the housing, allowing the unit to function in close spaces.
- For custom multi-hole True-Strip unit applications consult factory. Reference Page 2 for examples.
- The Moeller True-Strip unit may be utilized as a punch guide for piercing when material thickness is large relative to the size of the punch point, or when piercing small holes at an angle applying side load and resulting in punch breakage.

## Installation:

- The spring cap must be tightened to its positive stop to provide a flush mounting surface. If the cap is not fully engaged the True-Strip unit will not function properly.
- Standard hex wrench tools can be utilized for installation or removal of spring caps. Please reference hex tool sizes in the charts of this brochure. Moeller offers a unique universal hex tool that can be used for all sizes for removal of spring cap. Reference page 11.
- The spring may shift during installation of the spring cap creating interference during punch installation. The spring may be realigned by slightly tapping the stripper unit onto the punch.
- The designed overall length of each True-Strip unit is critical to prevent over stroking. All in-house alterations may result in failure if the proper amount of material is not removed from the face of the stripper.

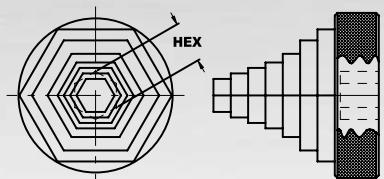
Note: Moeller reserves the right to modify, correct or improve this literature without notice.

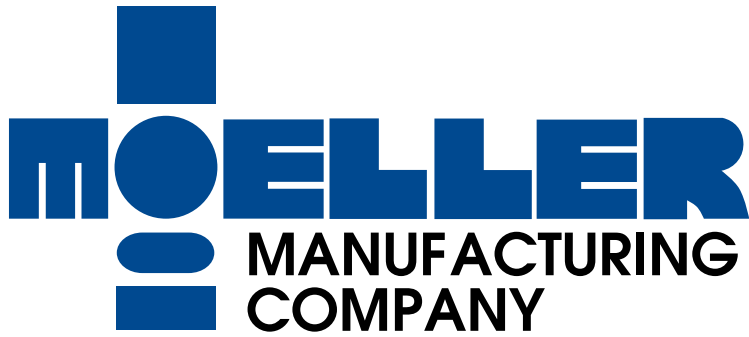
# OPTIONAL STRIPPING FORCE SPRING SELECTION CHART

STRIPPER UNIT CATALOG INCH/METRIC	SUPER-LIGHT LOAD SPRING CATALOG NUMBER	STRIPPING FORCE		LIGHT LOAD SPRING CATALOG NUMBER	STRIPPING FORCE		MEDIUM LOAD SPRING CATALOG NUMBER	STRIPPING FORCE		HEAVY LOAD SPRING CATALOG NUMBER	STRIPPING FORCE	
		RATE PER MM	MAX DEF.		RATE PER MM	MAX DEF.		RATE PER MM	MAX DEF.		RATE PER MM	MAX DEF.
IT_37-325/S_	RTS75-100	5LBS	26LBS	RLL75-100	13LBS	95LBS	RML75-100	22LBS	166LBS	RHL75-100	49LBS	367LBS
MT_10-80/S_		22N	166N		56N	424N		98N	741N		216N	1635N
IT_37-350/S_	RTS75-125	4LBS	40LBS	RLL75-125	10LBS	101LBS	RML75-125	16LBS	164LBS	RHL75-125	38LBS	377LBS
MT_10-90/S_		18N	180N		45N	449N		73N	730N		168N	1678N
IT_50-325/S_	RTS100-100	9LBS	70LBS	RLL100-100	23LBS	175LBS	RML100-100	33LBS	257LBS	RHL100-100	84LBS	655LBS
MT_13-80/S_		40N	310N		100N	777N		147N	1142N		375N	2913N
IT_50-350/S_	RTS100-125	7LBS	72LBS	RLL100-125	41LBS	181LBS	RML100-125	67LBS	267LBS	RHL100-125	67LBS	673LBS
MT_13-90/S_		32N	323N		80N	807N		118N	1190N		297N	2996N
IT_62-325/S_	RTS125-100	10LBS	95	RTL125-100	26LBS	237LBS	RTM125-100	43LBS	395LBS	RTH125-100	86LBS	789LBS
MT_16-80/S_		46N	422N		115N	1054N		192N	1760N		383N	3512N
IT_62-350/S_	RTS125-150	8LBS	34LBS	RLL125-150	21LBS	241LBS	RML125-150	42LBS	474LBS	RHL125-150	87LBS	994LBS
MT_16-90/S_		37N	151		94N	1072N		185	2109N		388	4423N
IT_75-325/S_	RTS175-100	13LBS	112LBS	RTL175-100	32LBS	277LBS	RTM175-100	56LBS	462LBS	RTH175-100	108LBS	924LBS
MT_20-80/S_		58N	497N		144N	1234N		240N	2057N		480N	4113N
IT_75-350/S_	RTS175-125	13LBS	126LBS	RTL175-125	32LBS	313LBS	RTM175-125	56LBS	522LBS	RTH175-125	108LBS	1045LBS
MT_20-90/S_		58N	562N		144N	1395N		240N	2325N		480N	4651N
IT_87-325/S_	RTS200-100	14LBS	125	RTL200-100	36LBS	310LBS	RTM200-100	60LBS	516LBS	RTH200-100	119LBS	1033LBS
N/A		64N	555N		159N	1378N		265N	2297N		530N	4595N
IT_87-350/S_	RTS200-125	14LBS	139LBS	RTL200-125	36LBS	346LBS	RTM200-125	60LBS	577LBS	RTH200-125	119LBS	1154LBS
N/A		64N	620N		159N	1540N		265N	2567N		530N	5135N
IT_100-325/S_	RTS215-100	15LBS	149LBS	RTL215-100	38LBS	375LBS	RTM215-100	64LBS	626LBS	RTH215-100	128LBS	1252LBS
MT_25-80/S_		68N	664N		171N	1670N		285N	2784N		570N	5569N
IT_100-350/S_	RTS215-125	21LBS	225LBS	RTL215-125	41LBS	440LBS	RTM215-125	64LBS	697LBS	RTH215-125	135LBS	1469LBS
MT_25-90/S_		92N	1002N		180N	1960N		285	3103		600N	6534N
IT_100-400/S_	RTS215-150	21LBS	185LBS	RTL215-150	52LBS	464LBS	RTM215-150	86LBS	772LBS	RTH215-150	172LBS	1546LBS
MT_32-80/S_		92N	825N		230N	2063N		383N	3435N		767N	6880N
IT_125-325/S_	RTS225-100	21LBS	192LBS	RTL225-100	52LBS	480LBS	RTM225-100	86LBS	800LBS	RTH225-100	172LBS	1601LBS
MT_32-90/S_		92N	854N		230N	2136N		383N	3558N		767N	7125N
IT_125-400/S_	RTS225-125	26LBS	229LBS	RTL225-125	65LBS	574LBS	RTM225-125	108LBS	957LBS	RTH225-125	216LBS	1914LBS
MT_32-100/S_		115N	1020N		288N	2554N		480N	4257N		960N	8515N
N/A	RTS275-100	26LBS	237LBS	RTL275-100	65LBS	595LBS	RTM275-100	108LBS	991LBS	RTH275-100	216LBS	1983LBS
MT_40-80/S_		115N	1057N		288N	2646N		480N	4411N		960N	8822N
N/A	RTS275-125	26LBS	237LBS	RTL275-125	65LBS	595LBS	RTM275-125	108LBS	991LBS	RTH275-125	216LBS	1983LBS
MT_40-90/S_		115N	1057N		288N	2646N		480N	4411N		960N	8822N
N/A	RTS275-150	26LBS	237LBS	RTL275-150	65LBS	595LBS	RTM275-150	108LBS	991LBS	RTH275-150	216LBS	1983LBS
MT_40-100/S_		115N	1057N		288N	2646N		480N	4411N		960N	8822N

NEWTONS/LBS CONVERSION: 1 NEWTON = .2248089 LBS.

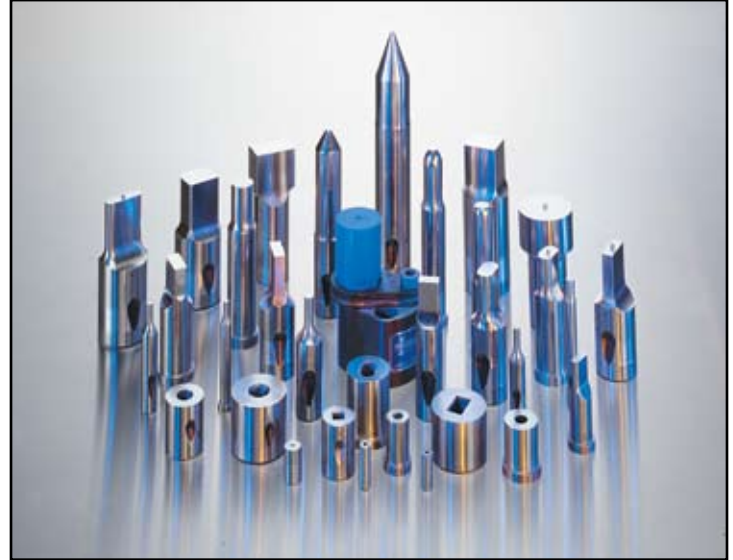
**MAINTENANCE HEX TOOL  
(FOR SPRING REPLACEMENT)  
CATALOG NO. METRIC: MTA01  
INCH: ITA01**





## STANDARD CATALOG ITEMS

- PUNCHES
- DIE BUTTONS
- RETAINERS
- STRIPPERS
- ACCESSORIES
- DIE SPRINGS
- NITROGEN CYLINDERS



## CUSTOM MADE SPECIAL DETAILS

- SPECIAL SHAPED PIERCING COMPONENTS
- COMPLEX TRIMMING, FORMING, COINING AND BENDING TOOLS.
- PILOTS, GUIDING MEMBERS, LOCATING AND TRANSFERRING COMPONENTS

*... Your Global Source  
For Standard and Special Die Components*

## CORPORATE HEADQUARTERS

43938 PLYMOUTH OAKS BLVD. • PLYMOUTH, MICHIGAN 48170-2584  
LOCAL (734) 416-0000 • TOLL FREE (800) 521-7613 • FAX (734) 416-2200

## BRANCH OFFICE

7116 CROSSROADS BLVD.  
BRENTWOOD, TENNESSEE 37027  
LOCAL (615) 373-3431 • TOLL FREE (800) 277-7019  
FAX (615) 371-9190

## MOELLER MANUFACTURING DE MEXICO

CIRCUITO EL MARQUES SUR# 43 • PARQUE INDUSTRIAL EL MARQUES  
EL MARQUES, QUERETARO C.P. 76246  
LOCAL (442) 253-12-00 • FAX (442) 253-12-01  
WWW.MOELLERDEMEXICO.COM.MX

E-Quote: [quote@moellerpunch.com](mailto:quote@moellerpunch.com) • [WWW.MOELLERPUNCH.COM](http://WWW.MOELLERPUNCH.COM)