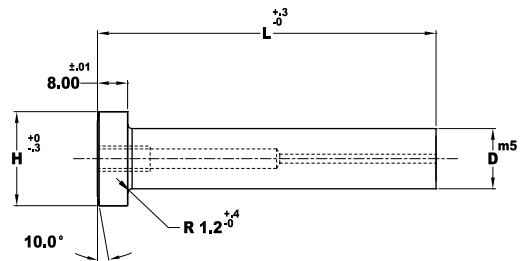
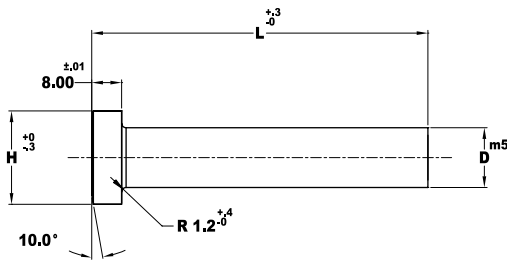


## SOLID/EJECTOR



### Material

Steel: CPM M4 RC 60-62  
Heads RC 40-55

FOR STANDARD ALTERATIONS SEE  
MASTER CATALOG

CATALOG TYPE SOLID	SHANK DIA D RANGE	HEAD DIA H	OVERALL LENGTH "L"			
			70	80	90	100
XMSX 10	8.01 - 10.00	13	X	X	X	X
XMSX 13	10.01 - 13.00	16	X	X	X	X
XMSX 16	13.01 - 16.00	19	X	X	X	X

CATALOG TYPE EJECTOR	SHANK DIA D RANGE	HEAD DIA H	OVERALL LENGTH "L"				EJECTOR SIZE
			70	80	90	100	
XMCX 10	8.01 - 10.00	13	X	X	X	X	MAE 5
XMCX 13	10.01 - 13.00	16	X	X	X	X	MAE 5
XMCX 16	13.01 - 16.00	19	X	X	X	X	MAE 6