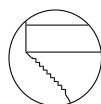
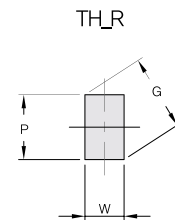
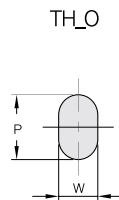
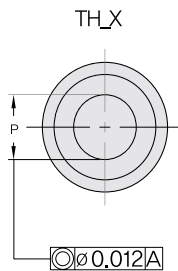
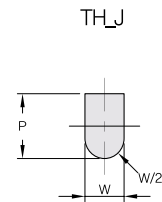
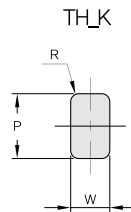
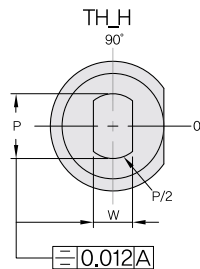
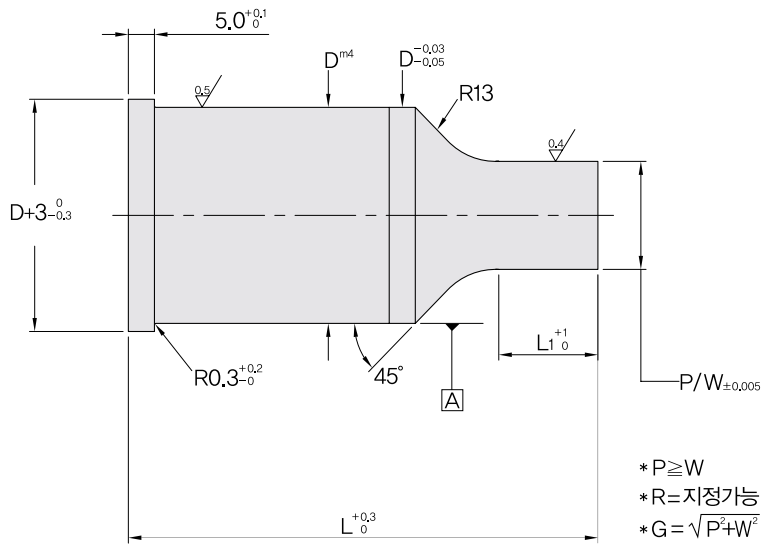




# PUNCH - THJ\_ • THP\_ EXTENDED RANGE PUNCH

TYPE THJ\_(EJECTOR)

TYPE THP\_(표준형)



\* D - P(or W) 가 10 보다 클때, 충이 생길수 있습니다.



# PUNCH - THJ • THP EXTENDED RANGE PUNCH

Type	호칭경 D	L1		원형 P	이형 W	L								
		Std.	Alt.			Alt.	60.0	63.0	70.0	71.0	80.0	90.0	100.0	
	40.0	19			20.00-39.99	8.00-40.00	●	●	●	●	●	●	●	●
	45.0	19			25.00-44.99	9.00-45.00	●	●	●	●	●	●	●	●
	50.0	19			30.00-49.99	10.00-50.00	●	●	●	●	●	●	●	●
	56.0	19			35.00-55.99	11.00-56.00	●	●	●	●	●	●	●	●
	63.0	19			40.00-62.99	12.00-63.00	●	●	●	●	●	●	●	●
THJ_	40.0	19	25		20.00-39.99	8.00-40.00		●	●	●	●	●	●	●
	45.0	19	25		25.00-44.99	9.00-45.00		●	●	●	●	●	●	●
	50.0	19	25		30.00-49.99	10.00-50.00		●	●	●	●	●	●	●
	56.0	19	25		35.00-55.99	11.00-56.00		●	●	●	●	●	●	●
	63.0	19	25		40.00-62.99	12.00-63.00		●	●	●	●	●	●	●
THP_	40.0	19	25	30	20.00-39.99	8.00-40.00			●	●	●	●	●	●
	45.0	19	25	30	25.00-44.99	9.00-45.00			●	●	●	●	●	●
	50.0	19	25	30	30.00-49.99	10.00-50.00			●	●	●	●	●	●
	56.0	19	25	30	35.00-55.99	11.00-56.00			●	●	●	●	●	●
	63.0	19	25	30	40.00-62.99	12.00-63.00			●	●	●	●	●	●

규격표기 방법    Catalog No.    D    -    L1    -    L    -    P,W  
                          THPR    50    -    30    -    70    -    P30.0, W10